









RFC Editor Report

IETF 102
Montreal

SLA – RFC Editor Time (RET)

	2016		2017				2018	
	Q3	Q4	Q1	Q2	Q3	Q4	Q1	Q2
Submissions								
Pages	2535	2008	2150	1093	1114	1735	2427	1999
Docs	80	64	101	52	49	65	77	58
PGTE	2202	1892	1981	1134	1018	1389	2133	1852
Publications								
Pages	2089	2118	2326	1720	1430	1113	1933	967
Docs	72	58	90	64	59	50	66	42
Docs met SLA	72	57	89	62	45	44	66	26
SLA tier	Tier 2	Tier 2*	Tier 2	Tier 2*	Tier 1	Tier 1	Tier 2	Tier 2*
SLA								

Tier 1
 PGTE < 1950
 67% RFCs pub <= 6 wks RET

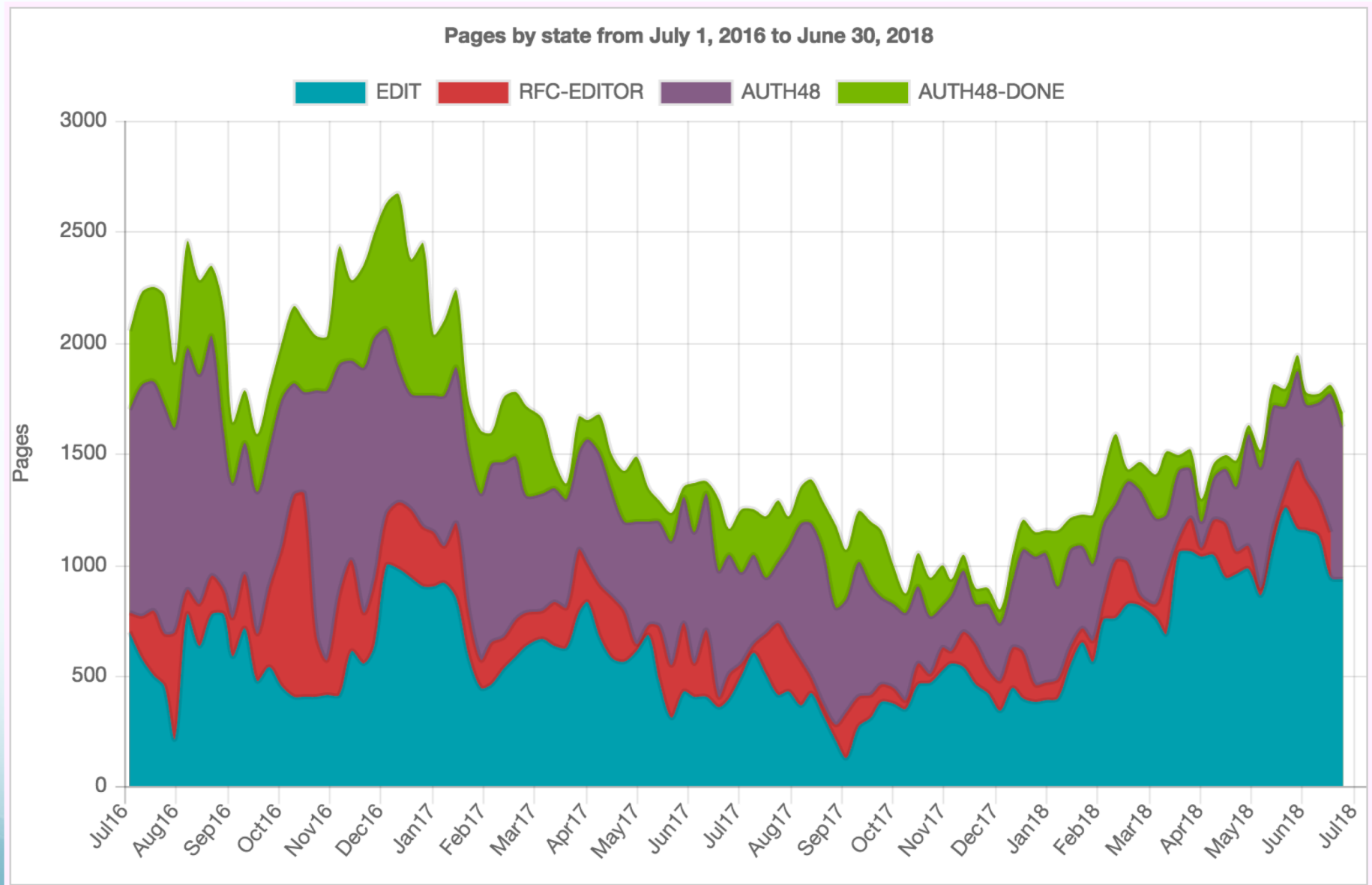
Tier 2
 1950 < PGTE < 3072
 50% RFCs pub <= 12 wks RET

Tier 3
 3072 < PGTE
 possibly renegotiate expected
 RET

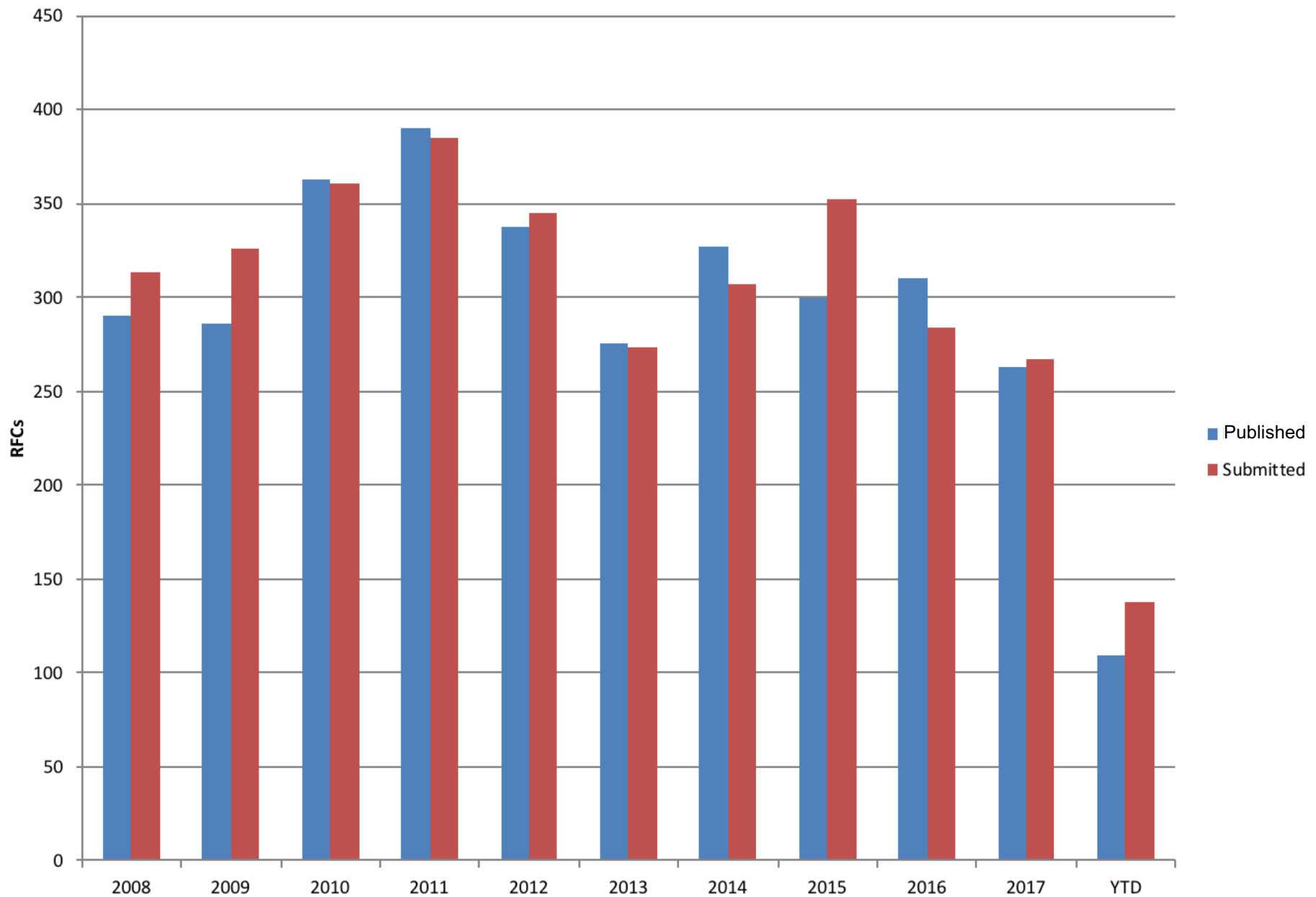
Tier 2* indicates when Tier 2 is being applied in the “subsequent quarter” as per the SLA.

PGTE is Pages Gone To Edit. Please see <https://www.rfc-editor.org/report-summary> for more details.

Primary Processing States



RFCs Published and Submitted from 2008 to 2018 (as of 8 July)



Since IETF 101

- Publications: 67 RFCs (1802 pages) 9 March – 8 July
- We continue to use id2xml to create an XML file when no usable source file is provided
(17% of docs from the last few years do not have an XML source file.)
- Started [GitHub AUTH48 experiment](#) for RFC-to-be 8446 (draft-ietf-tls-tls13).
- Completed the transfer of the Procedures Manual (internal) to a wiki.

Format-Related Activities

Testing and retesting v3 tools as they are updated:

- [svgcheck](#)
- [RFClint](#)
- [XMLdiff](#)

Ready to start testing:

- xml -> txt converter (first released 12 July in [xml2rfc](#) v2.10.0)
Allows testing of v2 to v3 converter, text to v3 converter, and preptool

Ongoing: drafting internal procedures, learning v3 vocabulary.

Developing and testing updates to publication and archiving software.

Questions or Comments

- Visit us at the RFC Editor desk this week!
- Send mail to rfc-editor@rfc-editor.org
- Check out www.rfc-editor.org for FAQ, stats, and more